

NEWS FROM LYNSTED WITH KINGSDOWN PARISH COUNCIL

PLANS FOR NEW HOUSES OPPOSITE THE VALLANCE



Land West of the Street

At May's Parish Council meeting, Burlington Property Group presented outline proposals for a new housing development on land West of The Street in Lynsted. This is the field where the village fete used to be held, opposite The Vallance.

The developers are planning eight or nine homes. They say they are keen to work with the local community to address the concerns raised in 2015, when a similar scheme was put forward but not progressed.

They are looking to retain the green space facing The Street, making this an open area for use by residents. They state the new houses to the west of the site would take into account the character and appearance of the area and nearby listed buildings. There is also the potential for a community facility.

A public meeting has been arranged so residents can discuss the plans with the developers. This will be held on Saturday June 24 at Lynsted Church between 10am and noon.

Please come along to make your views known.

DEVELOPERS APPEAL

The application to build, initially, ten houses on Land East of Lynsted Lane was rejected by Swale's planning committee – but the developer has now appealed to the Government's Planning Inspectorate. We have written to the Inspector reiterating our objections and presenting new evidence. The outcome is awaited

Similarly, the application to build houses on land off Cellar Hill was refused by Council officers and the developer has appealed this decision as well.

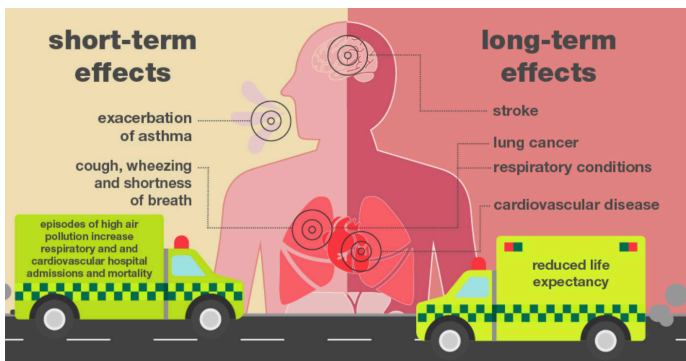


Land East of Lynsted Lane

SWALE LOCAL PLAN UPDATE

Swale Council has put its Local Plan for the Borough on hold, until the Levelling Up and Regeneration Bill gains Royal Assent - or there is greater certainty regarding national policy for the local plan system. This is likely to re-surface in the coming year.

Four out of five scenarios in the most recent 'Issues and Options' consultation included development in the Teynham and Lynsted area, so our Parish remains under threat from excessive housebuilding on greenfield sites.



Health effects of air pollution

AIR QUALITY EXCEEDS WHO LIMITS

Analysis of Imperial College modelling shows all addresses in the Parish to be in exceedance of the World Health Organisation (WHO) limits for particulate matter and nitrogen dioxide (NO₂) - but especially along the London Road that borders the parishes of Lynsted and Teynham.

We responded to the Government's consultation on air quality, arguing that communities should have open access to calculations of additional harm arising from every planning application. Currently, developers can claim their housing plans have negligible impact when taken in isolation, so the cumulative impact is ignored.

We also commented on reforms to the National Planning Policy Framework. We argued for revision of housing targets, prioritising brownfield sites and greater input from local communities.



Lynsted litter pick

LITTER PICK: 35 BAGS OF RUBBISH

We had a fantastic community response to the Litterpick in April, organised by the Parish Council. Twenty volunteers turned up and we collected 35 sacks of rubbish. Teams fanned out across the Parish, starting at the top of Lynsted Lane and heading towards Middle Lynsted via Claxfield Lane and Cellar Hill.

It's regrettable that quite so much litter had to be picked up, but Lynsted is looking much tidier as a result. Many thanks to everyone who helped, and we intend to make this a more regular event

IMPROVEMENT AT PRIMARY SCHOOL

A full Ofsted inspection at Lynsted and Norton Primary School has underlined the 'significantly' improved quality of education since the last inspection. Headteacher Catherine McLaughlin, appointed in September 2021, says the school is on the right path with clear actions of how to make further improvements.



Catherine thanked the staff, governors and Trust team, adding she was really pleased the inspectors recognised the progress the school has made in developing the curriculum.

NEWS IN BRIEF

- As part of our ongoing campaign to slow down traffic in the Parish, village gates have been installed in Kingsdown and 30mph repeater signs and roundels are in place on Lynsted Lane. 'Pedestrians on Road' warning signs have also been erected.
- A defibrillator has been installed in the garden of the Black Lion pub.
- A new four-year fixed-price contract has been signed for the 41 streetlights managed by the Parish Council, saving £2,280 per annum and cushioning us from the subsequent hikes in electricity costs.
- The Lynsted footpath map has been replaced and is on display opposite the Black Lion, whilst the Parish notice boards in Lynsted and Kingsdown have also been refurbished.
- Cllr Lloyd Bowen has been re-elected as Borough Councillor for Teynham & Lynsted and is joined by Cllr Julien Speed who replaces Mike Whiting. Cllr Rich Lehmann remains our local Kent County Councillor.

LYNSTED WITH KINGSDOWN PARISH COUNCIL

Contact address: PO Box 601, Sittingbourne, Kent ME10 9GJ

Email: lkpc@hotmail.co.uk • Tel: 07778 591909 • Web: www.lkpc.uk